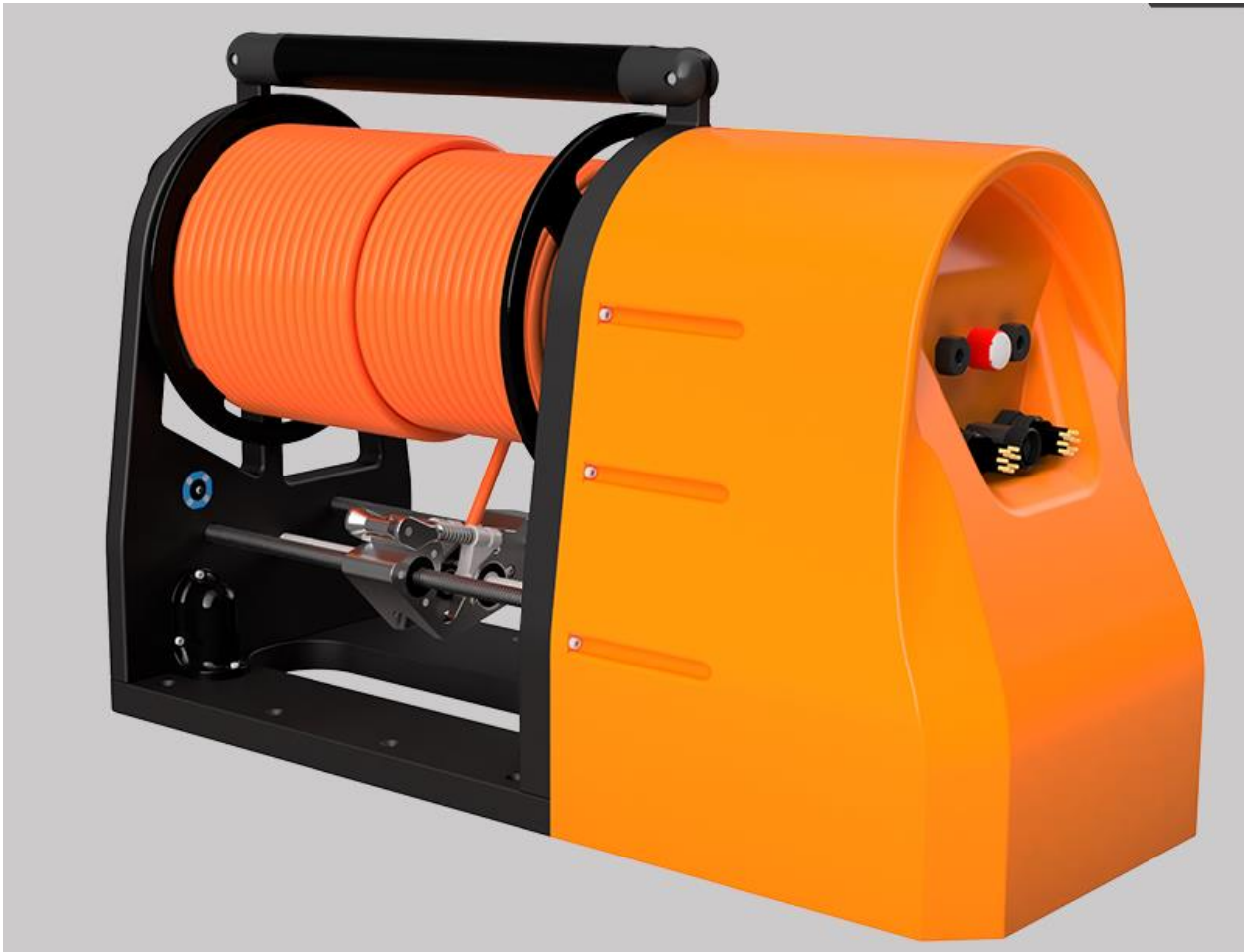


UNI-WINCH (MINI)

Survey Equipment



Unique Group's Uni-Winch is a network controlled powered spool, that can be utilised for either static SV and sonde deployments, or to tether an aerial drone that extends the communications range of a USV.

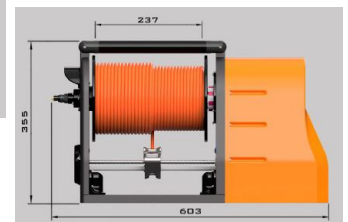
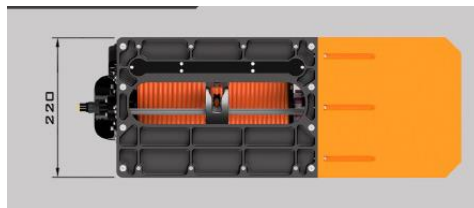
In association with its Partner Hydroid Robotics, Unique Group has adapted its aerial drone spooling winch, to a multi-purpose, network controlled, lightweight marine spooling winch particularly suited for ASV operations.

UNI-WINCH (MINI)

Survey Equipment

Tether Management System

SOFTWARE	Communication	Web Interface + API
PHYSICAL	Weight (no tether)	20 kg
	Continuous Motor Torque (Max Torque)	48 NM/120 NM
	Continuous Pull Force (varies based on tether diameter + amount of tether on spool)	47 KGF – 80 KGF
	Brake Holding Torque	100 NM
	Max Pull Force (with brake applied)	140KG
	Max Spool Speed @ Rated Torque	28 RPM
	Input Voltage	24 VDC
	Rated Current/Peak Current	20A/50A
	Compatible Tether Diameter Range	4-13 mm
	Slip-Ring Specs	6 @ 24VDC, 2A / 2 @ 400 VDC, 10A



MAXIMUM TETHER LENGTH BY TETHER DIAMETER

