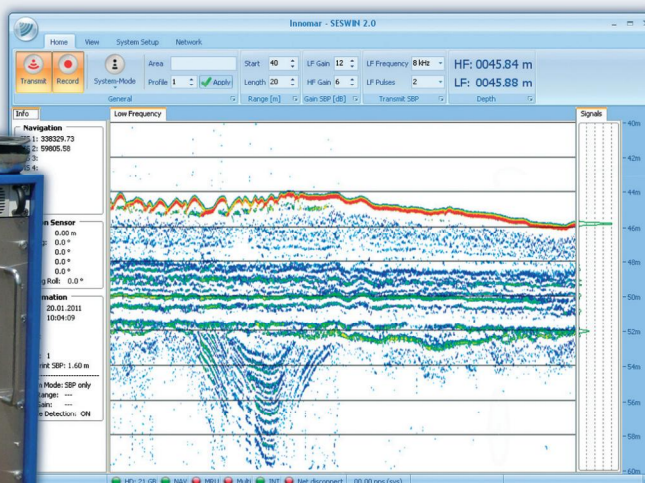


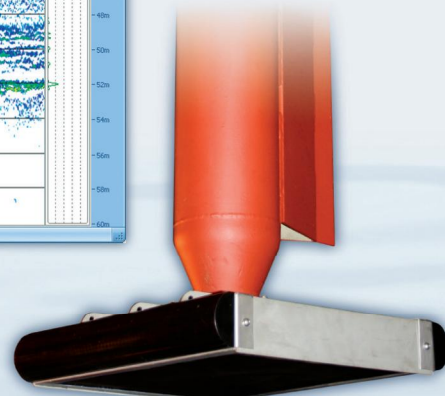


Top-side unit



Screenshot of the operating software

Transducer



► **Performance**

- water depth range: 2 – 2,000 m
- penetration: up to 70 m, depending on sediments
- layer resolution: up to 5 cm
- motion compensation: heave, roll
- beam width @ 3 dB: $\pm 1^\circ$ / footprint < 3.5% of water depth for all frequencies

► **Transmitter**

- primary frequencies: approx. 100 kHz (band 85 – 115 kHz)
- secondary low frequencies: 4, 5, 6, 8, 10, 12, 15 kHz (band 2 – 22 kHz)
- primary source level: > 247 dB/ μ Pa re 1 m
- pulse width: 0.07 – 2 ms
- pulse rate: up to 40/s
- multi-ping mode
- pulse type: CW, Ricker, LFM (chirp)

► **Acquisition**

- primary frequency (echo sounder, bottom track)
- secondary low frequency (sub-bottom data, multi-frequency mode)
- sample rate 96 kHz @ 24 bit

► **System Components**

- transceiver unit 19 inch / 14 U (WHD: 0.52 m x 0.65 m x 0.50 m; 80 kg)
- transducer incl. 30 m cable (WHD: 0.50 m x 0.12 m x 0.50 m; 60 kg)
- system control: internal PC
- KVM remote control

SES-2000 medium-100 Parametric Sub-bottom Profiler

► **Software**

- SESWIN data acquisition software
- SES Convert SEG-Y/XTF data export
- SES NetView remote display
- ISE post-processing software

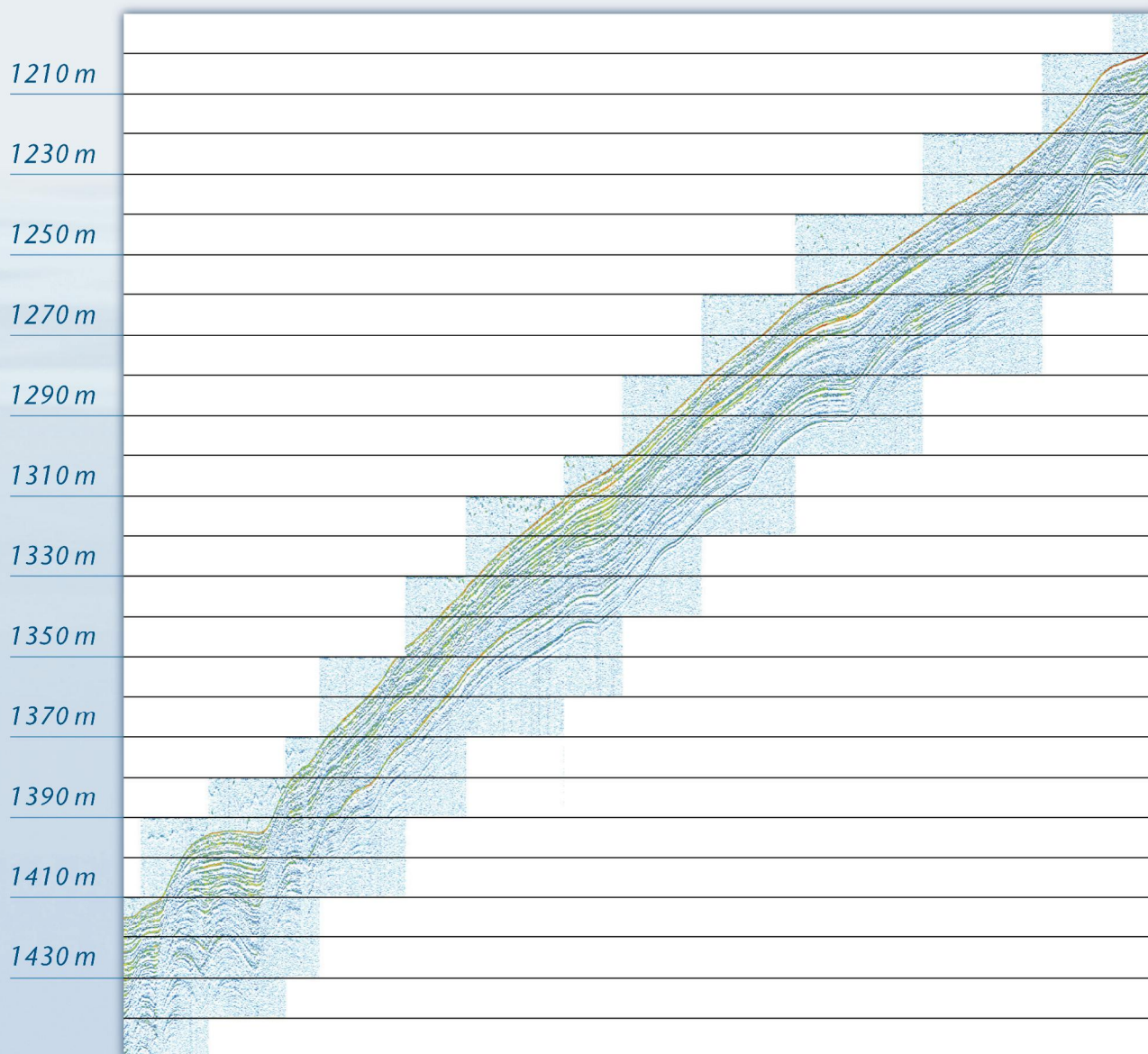
► **Power Supply Requirements**

- 100 – 240 V AC / 50 – 60 Hz
- power consumption: < 700 W



www.innomar.com

Survey example of SES-2000 medium-100



Pacific (Chile) echo plot example – Frequency 8 kHz, pulse length 800 μ s, profile length 10800 m

Innomar Technologie GmbH

Schutower Ringstraße 4
D-18069 Rostock
Phone (Fax) +49 381 44079-0 (-299)
E-Mail info@innomar.com



www.innomar.com